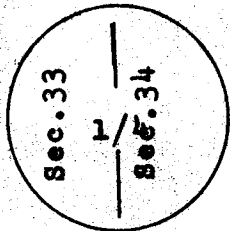


JAN 24 1983 AT 9:45 O'CLOCK A.M.

684858
Reception No. JANET C. WHITEHEAD, Recorder

CERTIFIED LAND CORNER RECORDATION

DESCRIPTION OF CORNER EVIDENCE FOUND, AND ORIGINAL RECORD (If known)



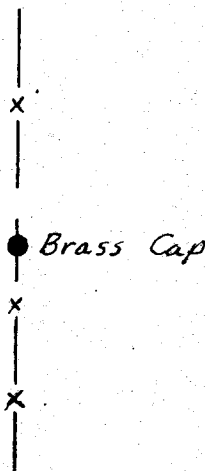
Found GLO Brass Cap as described in the 1934 Dependent Resurvey.

Location easily found by reference to USGS 7 1/2' Quad Map Hecla, Wyo.

DESCRIPTION OF MONUMENT AND ACCESSORIES ESTABLISHED TO PERPETUATE THE ORIGINAL LOCATION OF THIS CORNER:

NONE

SKETCH, WITH COURSE AND DISTANCE TO ADJACENT CORNER IF DETERMINED IN THIS SURVEY. (May Sketch or Paste Reproduction on Reverse Side.)



(See Map on Reverse Side)

January, 1983

I, Edward C. Fry certify that I have carefully performed ~~XXXXXX~~ the work done on the diagrammed corner as reported on this recordation form and approve the same.

Edward C. Fry
Signature of Surveyor

PE/LS 662
Registration No.

STATE OF WYOMING,

Office of Clerk and Recorder,

County of Taramit

This "corner record" was filed for record on the JAN 24 1983 day of 1983, 1983, was noted on the cross-index plat and is assigned page No. , in book No. .

Photographed _____
Indexed _____
Posted _____
Assessor _____

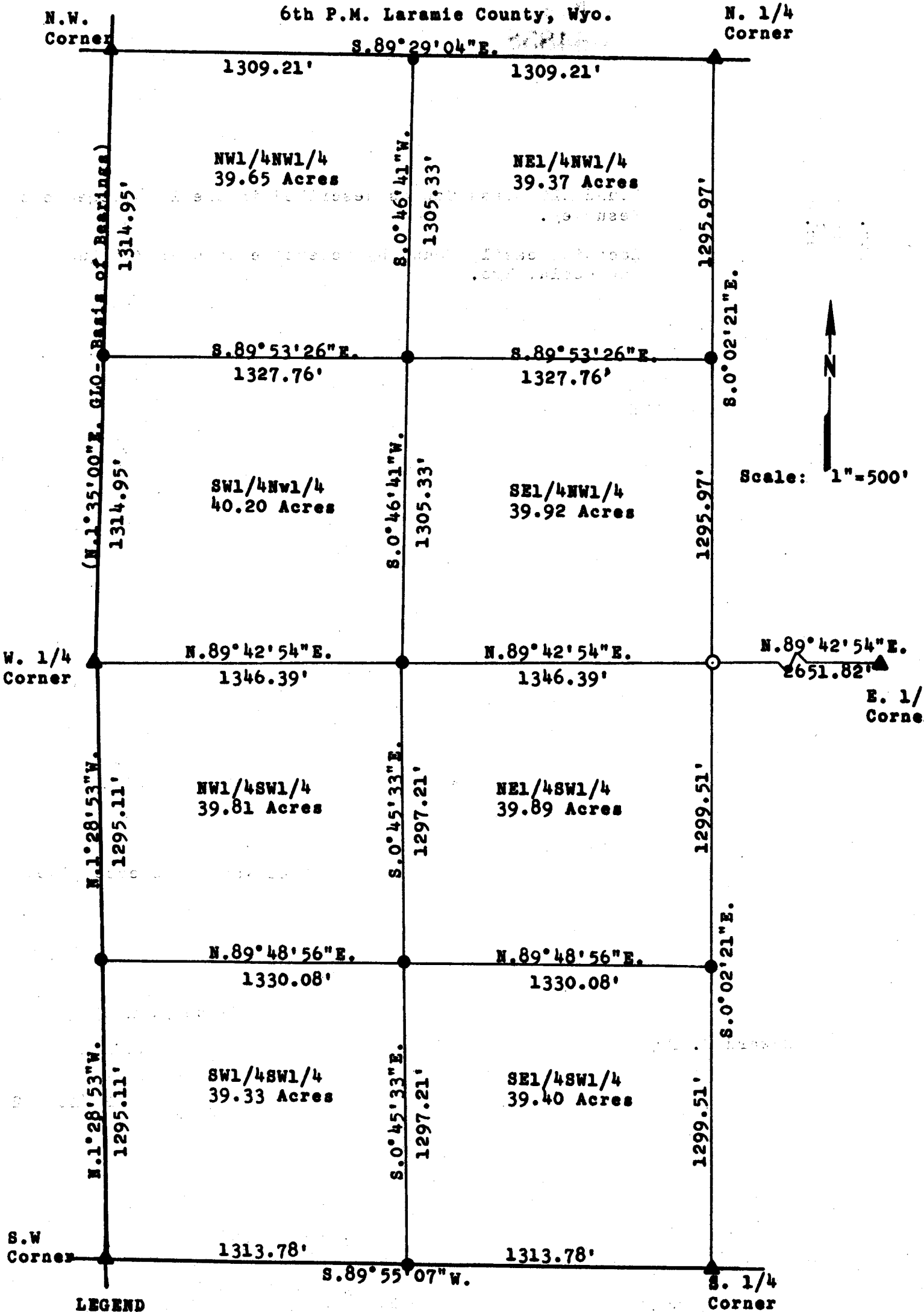
Janet C. Whitehead
County Official
Cross Index No. _____ T. _____ R. _____ Mer. _____
_____ T. _____ R. _____ Mer. _____
_____ T. _____ R. _____ Mer. _____
_____ T. _____ R. _____ Mer. _____
_____ T. _____ R. _____ Mer. _____
_____ T. _____ R. _____ Mer. _____

684858

MAP OF SURVEY

W¹/₂ Section 34, T. 14 N., R. 70 W.

6th P.M. Laramie County, Wyo.



LEGEND

- ▲ GLO Brass Cap
 - 1 1/2" Iron Pipe with Aluminum I.D. Cap
 - 5/8" Rebar with Aluminum I.D. Cap
- By reference to survey made January 1983 by Edward C. Fry.

Edward C. Fry
 Wyo. Reg. P.E./L.S. # 662